



Intermunicipal cooperations in city-suburban areas: chances and problems – the example of planning for industrial zones in the Rostock area

- I. global influences for regional growth
- II. regional setting facts
- III. main goals for the sustainable regional development

Final conference

Interreg III B Projekt „SEBco“

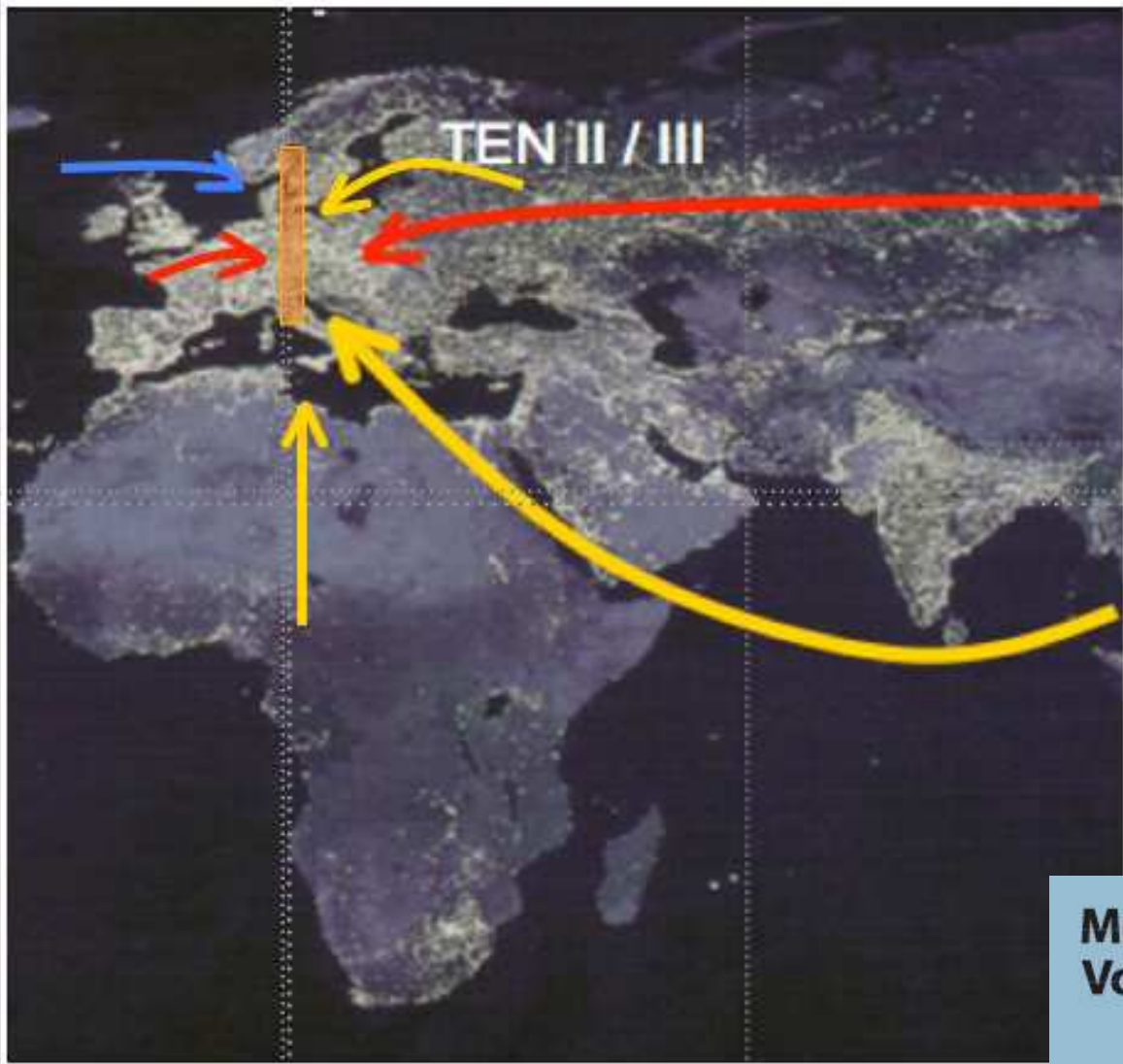
Schwerin, 13.11.2007

Gerd Schäde, Regional Office for Spatial Planning MM/R

**Mecklenburg
Vorpommern** 

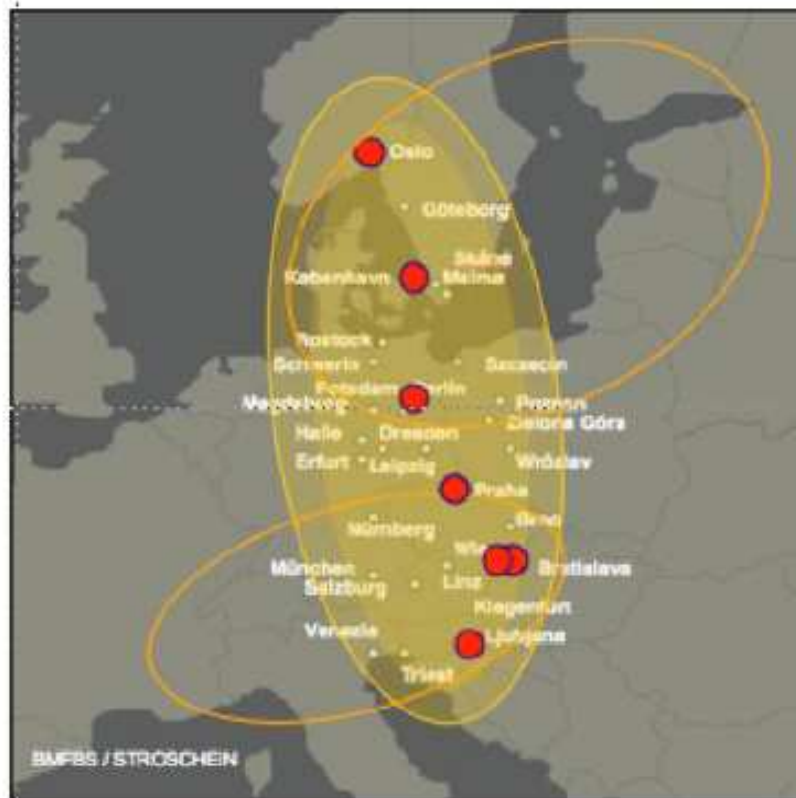


Wachstumsregion an der Ostsee
innovativ – maritim – naturnah



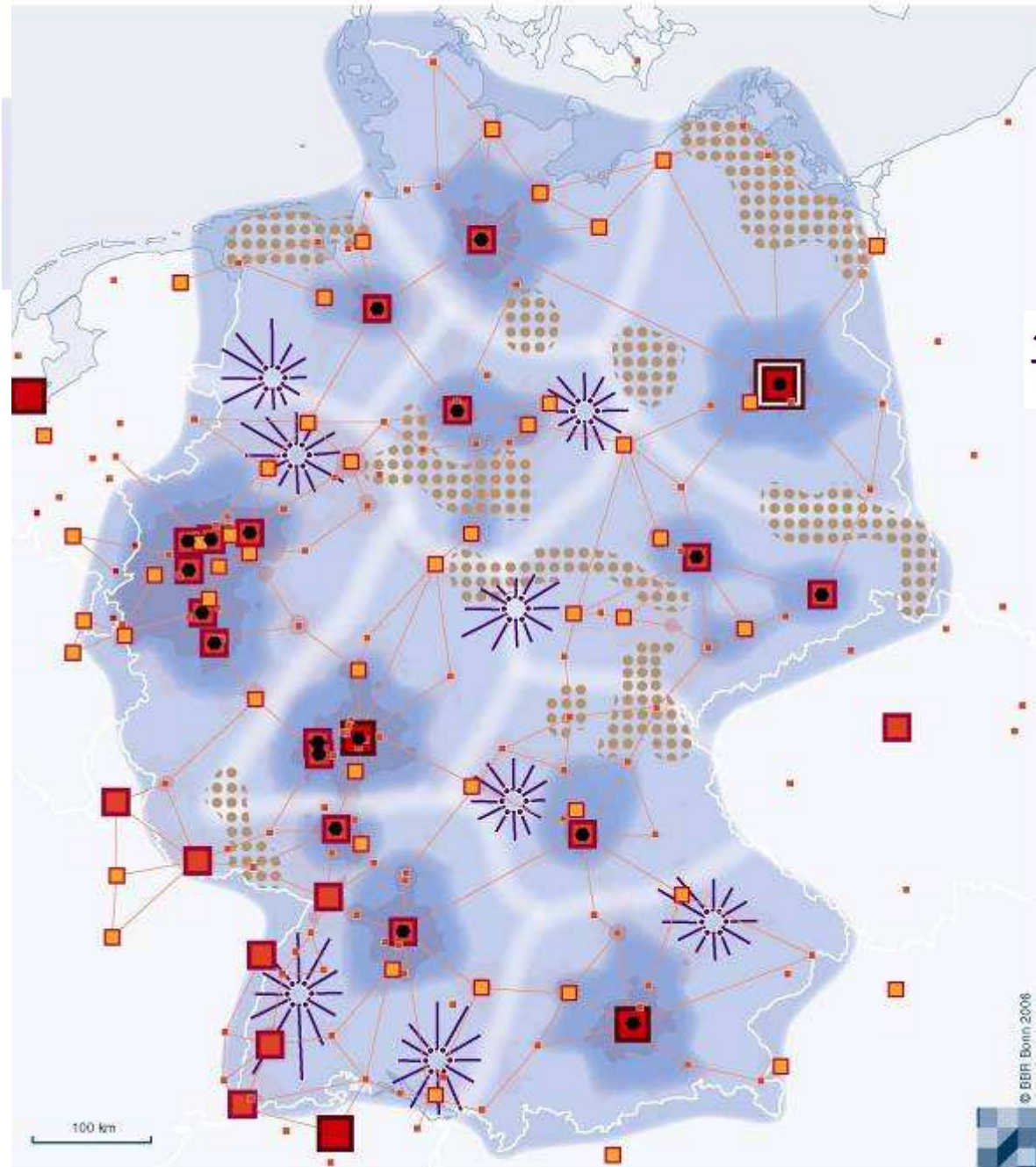


Wachstumsregion an der Ostsee
innovativ – maritim – naturnah



Mecklenburg
Vorpommern

Mission Statement: Growth and Innovation

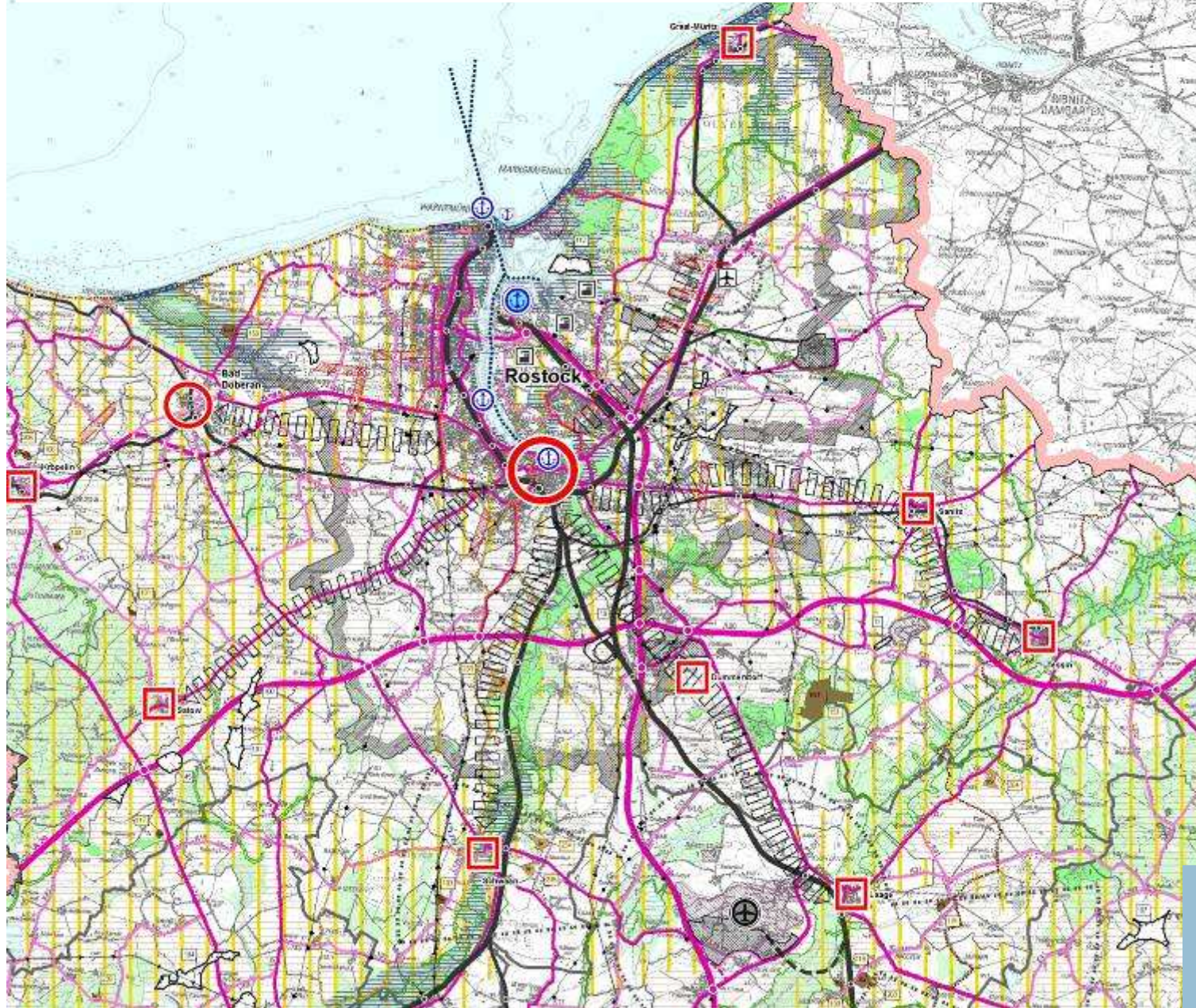


Growth areas outside closer metropolitan interlocked areas



Wachstumsregion an der Ostsee
 innovativ – maritim – naturnah

First draft of the Regional spatial development programm (2nd generation)



Wachstumsregion an der Ostsee
innovativ – maritim – naturnah

City- Suburban –Area Rostock



Wachstumsregion an der Ostsee
innovativ – maritim - naturnah





Wachstumsregion an der Ostsee
innovativ – maritim – naturnah

Areas for Commerce/ Industrial areas Mission Statement of spatial development/ Starting out

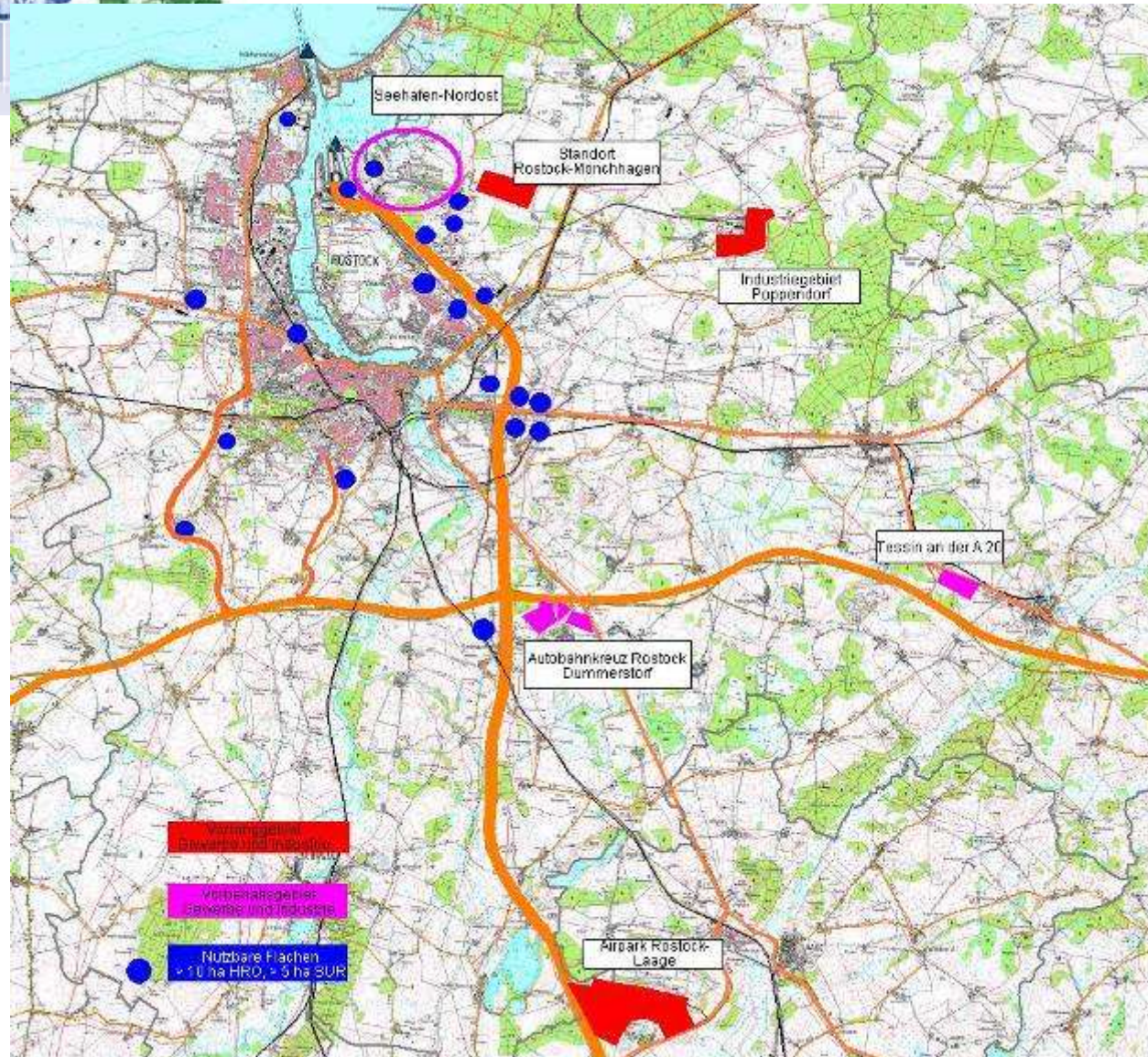
„Due to the economic, social and ecological starting out of the country the creating and securing of jobs will get the first priority in all Weighing decisions“

Starting out:

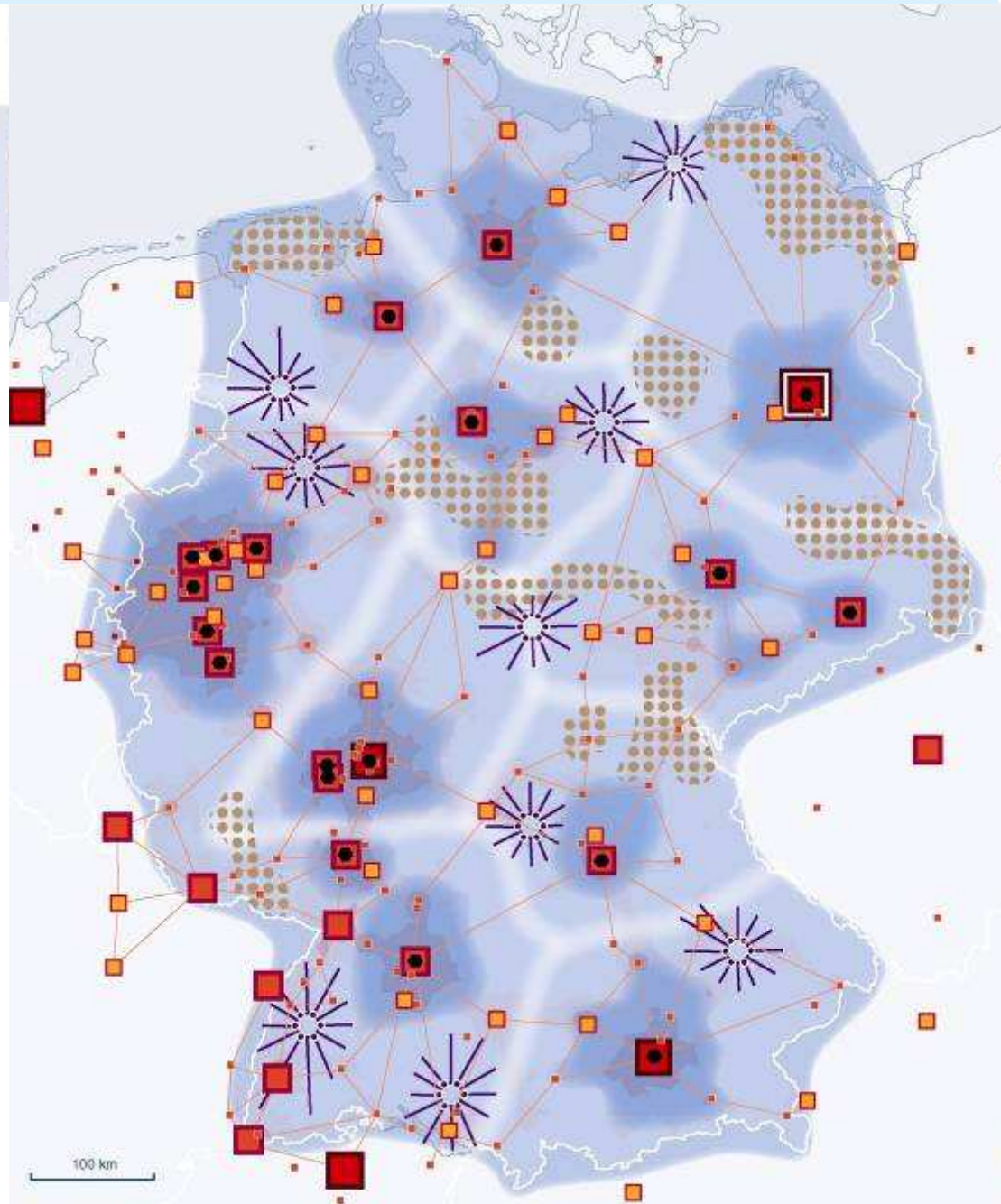
- Through expansion and settlements in recent years increased marketing of large-scale commercial and industrial areas and increasing demand
- Inquiries of investors for industrial estates from 10 ha, especially near the harbor can no longer served!



Wachstumsregion an der Ostsee
innovativ – maritim – naturnah



Mission Statement: Growth and Innovation



Growth areas outside closer metropolitan interlocked areas



Ich danke für
Ihre
Aufmerksamkeit!

